

Capital Commons

Introducing Capital Commons
Retail & Office Premises at Capital Crossing



**CAPITAL
CROSSING**





**CAPITAL
CROSSING**

Capital Commons

Multi-Tenant Retail & Office Space



Leasable
Area

Retail Space
30,000 sq. ft.

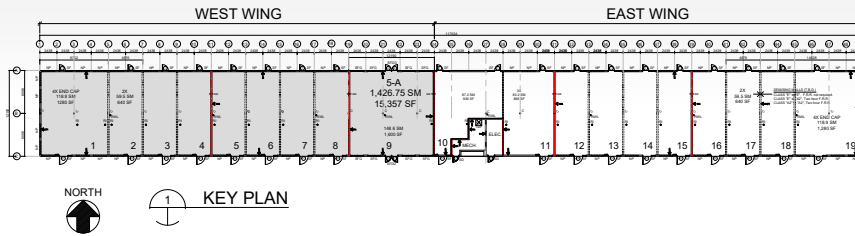
Office Space
10,000 sq. ft.

capitalcrossing.ca

Capital Commons



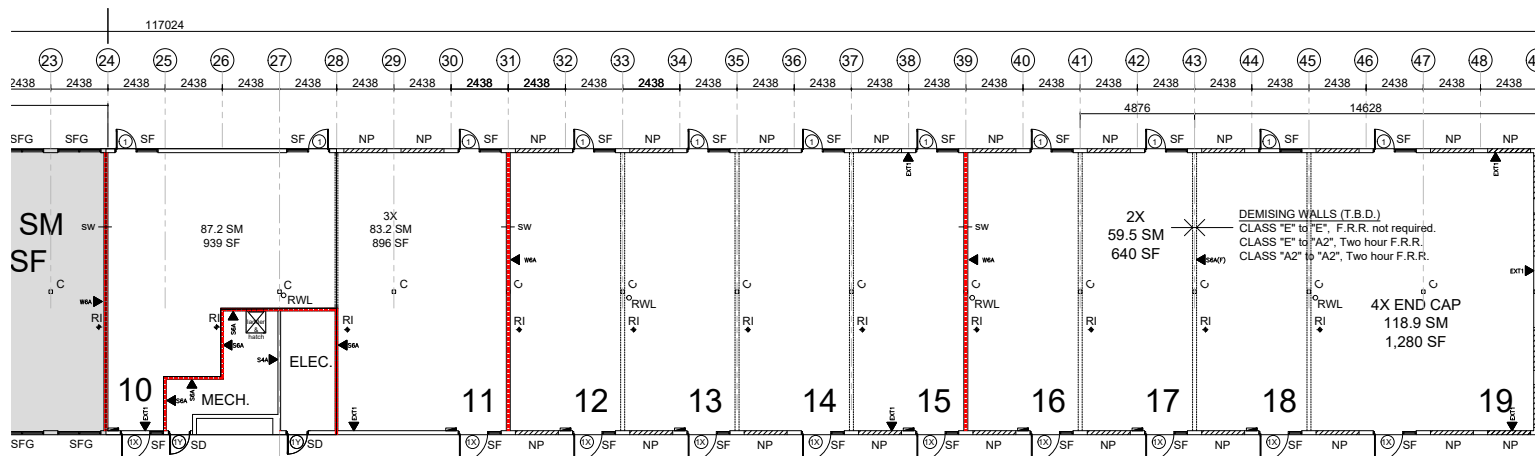
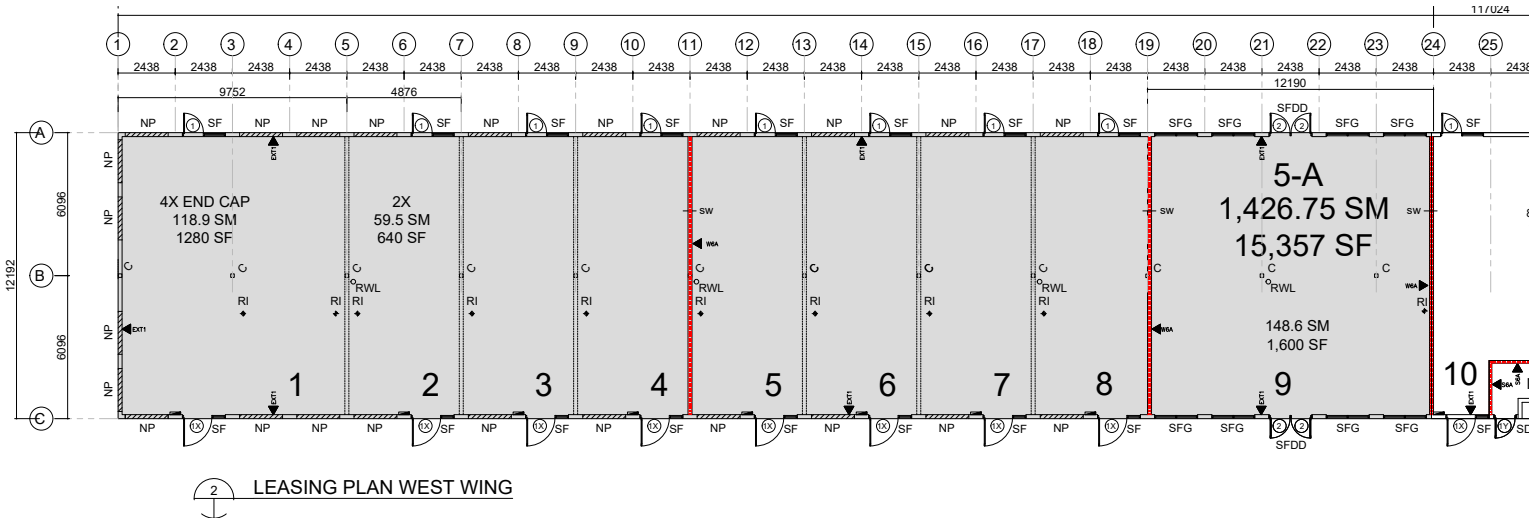
**CAPITAL
CROSSING**



ABBREVIATION LEGEND:
 NP - Knock out panel framed for future storefronts
 SF - Storefront entry/exit. One door, one sidelight
 SFG - Storefront four seasons glazing.
 SD - Single door utility entry/exit.
 SFDD - Storefront four seasons entry/exit double door
 RI - Stub up sanitary for tenant fixture tie in. (See Mech.)
 RWL - Rain water leader connected to storm
 C - Columns
 SW - Shear Wall

GROSS FLOOR AREA = 1,426.75 SM (15,357 SF)
 Useable = 1,394.20 SM (15,007 SF)
 Common = 32.55 SM (350 SF) includes utility
 Gross-up Factor 1.02

Available For Lease



Duke Street
Kick-Off
Building

Bay Frontage
16' ft; 24' ft;
32' ft +

Bay Depth
40' ft

Clear Ceiling
Height 10' ft;
12' ft to
Roof Deck

Join Us

At Capital Crossing

Geographically equidistant from the Regina South and Regina East retail nodes, Capital Crossing is providing the first significant opportunity for stores and restaurants to expand into Regina North West, the City's highest populated primary trade area.

Join the lead of big-box retailers who have moved into this market – including Walmart, Home Depot and The Real Canadian Superstore. Three market grocery retailers include: Sherwood Co-op Grocery, Safeway, Sobeys and Walmart Grocery.

Capital Crossing is slated to provide the first shop-live-work-play & stay community in Regina North West.



**CAPITAL
CROSSING**



Gord Scrapper
(306) 570-6777
gmscraper@capitalcrossing.ca

capitalcrossing.ca